

david paré
presents

THE

PROFILES

sponsored by



david paré
presents

THE

PROFILES

beyond interoperability...

sponsored by



JRS
PARTNERS

about

me...

david **paré**



JRS
PARTNERS

conference
speaker

ASSOCIATION CANADIENNE
D'INFORMATIQUE DE LA SANTÉ



THE *Open* GROUP



*Accredited
Program*

certified
enterprise architect



Project Management Institute

certified

project manager



certified
ITIL v3



certified
wine sommelier

**but that's a
different *story*...**

enough
about me

now...

do you
remember...

infoway - profile documentation



EHR Reference Architecture

Packages

- Business Views
- EHR Conceptual Data Model
- Interaction Structure
- System
- Timeline
- Overview
- Storyboard to Encounter Matrix

[EHR Reference Architecture](#)

Content Diagram Overview



[Get SVG Format](#)

General Info

Name	Overview
Type	Content Diagram
Version	1.2.8 (2006-03-21)



EHR Interoperability Profiles (EHR-IP)



EHR Reference Architecture

Packages

- Business Views
- EHR Conceptual Data Model
- Interaction Structure
- System
- Timeline
- Overview
- Storyboard to Encounter Matrix

[EHR IP Sequence Diagrams](#)

EHR IP Sequence Diagram Overview

EHRIP03 -
Get Patient Demographic Data

EHRIP04 -
Put Patient Demographic Data

EHRIP06 -
Put New Patient

EHRIP08 -
Put Patient Consent

EHRIP09 -
Get Patient Health Profile

EHRIP 10 -
Search Patient

EHRIP 11 -
Add New Client Registry Patient

EHRIP 12 -
List Events

EHRIP 13 -
Get Event

EHRIP 14 -
Unmask Patient Information

EHRIP 15 -
Put Event

EHRIP 16 -
User Log On

EHRIP 17 -
User Log Off

EHRIP 18 -
Correct Event

EHRIP 19 -
Index Event

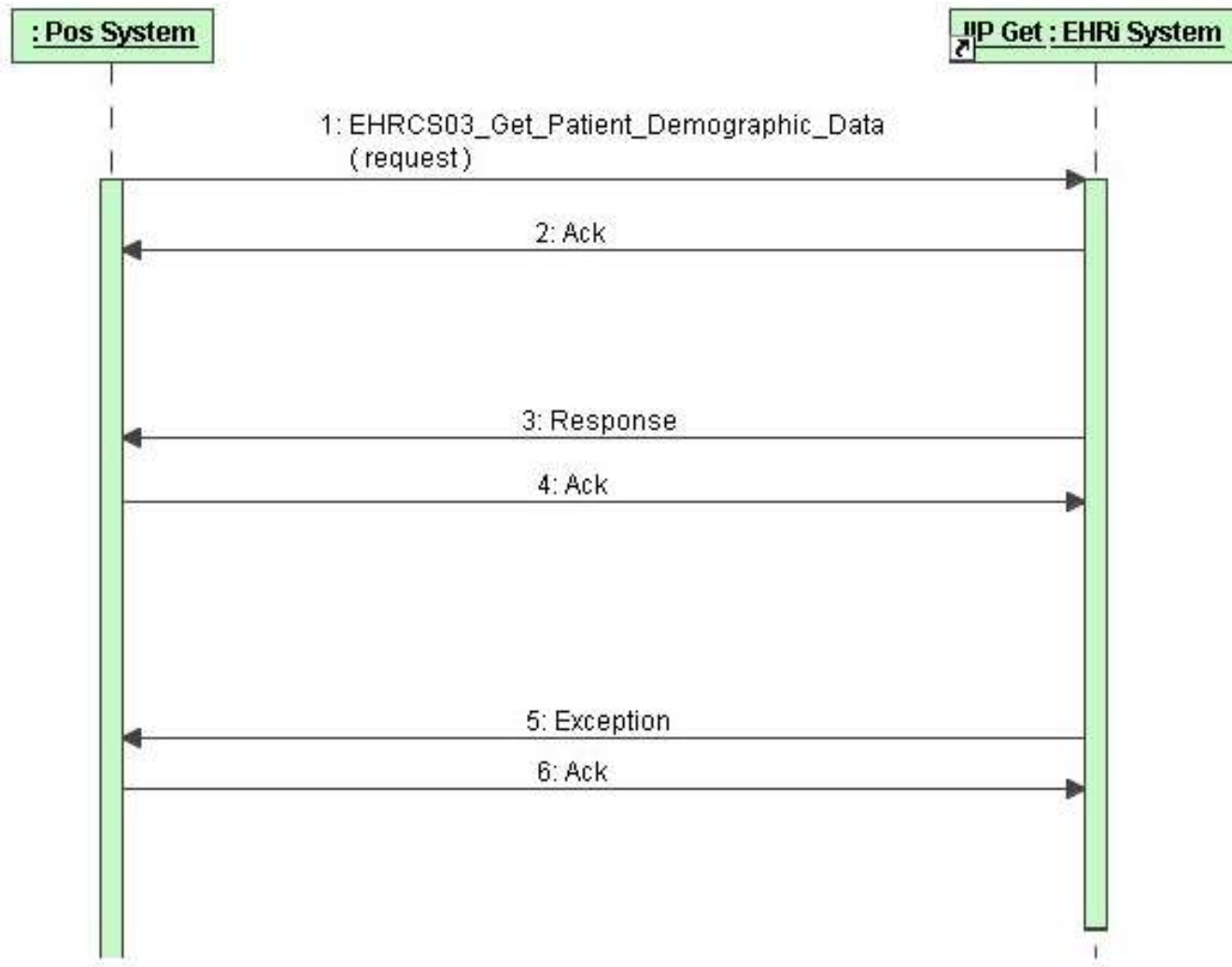
[Get SVG Format](#)

General Info

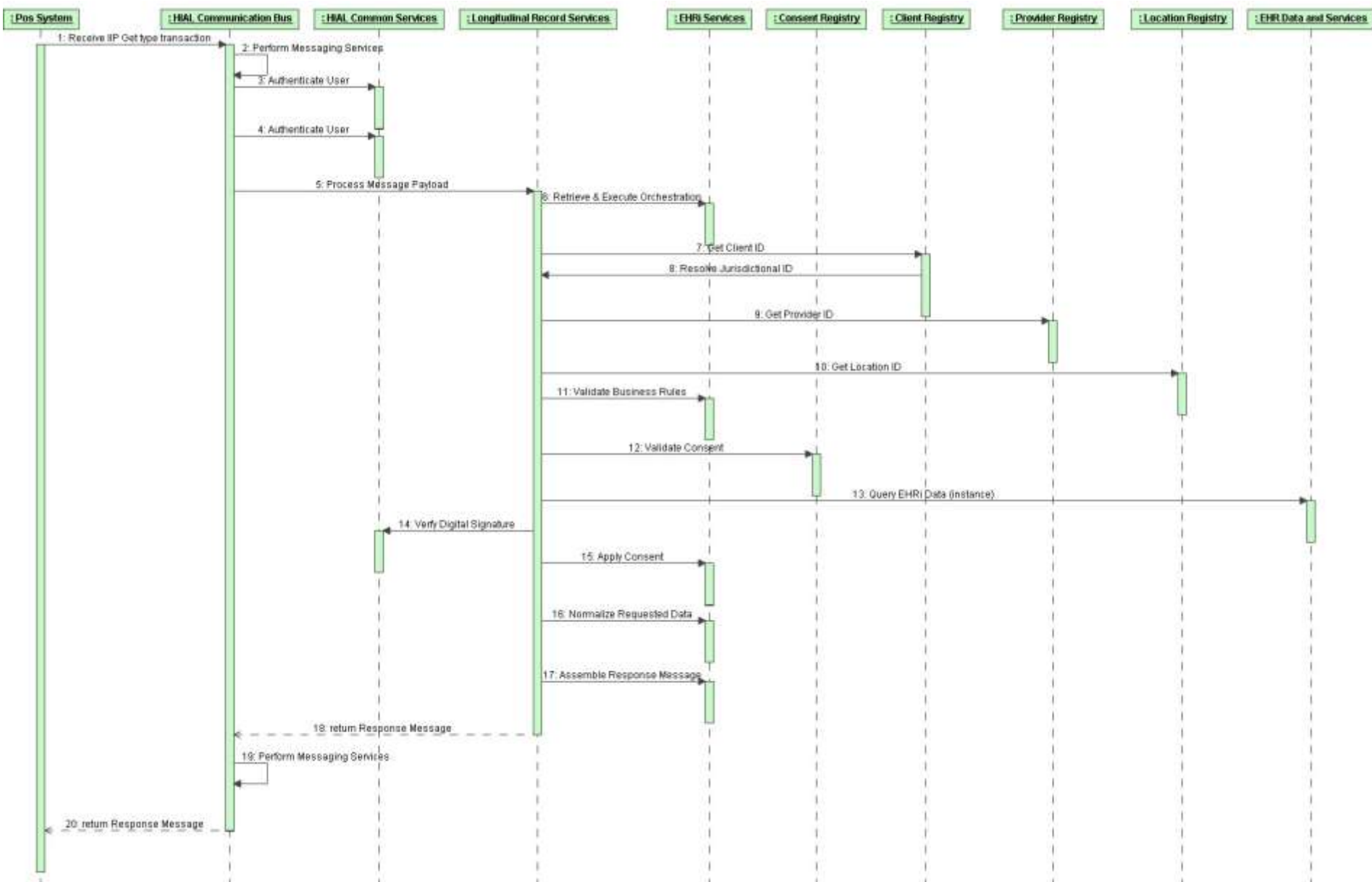
Name EHR IP Sequence Diagram Overview



EHR Interoperability Profiles (EHR-IP)



Infostructure Interoperability Profiles (I-IP)



did you get it ?

at the **time...**

i did not

get it ?!



ok...

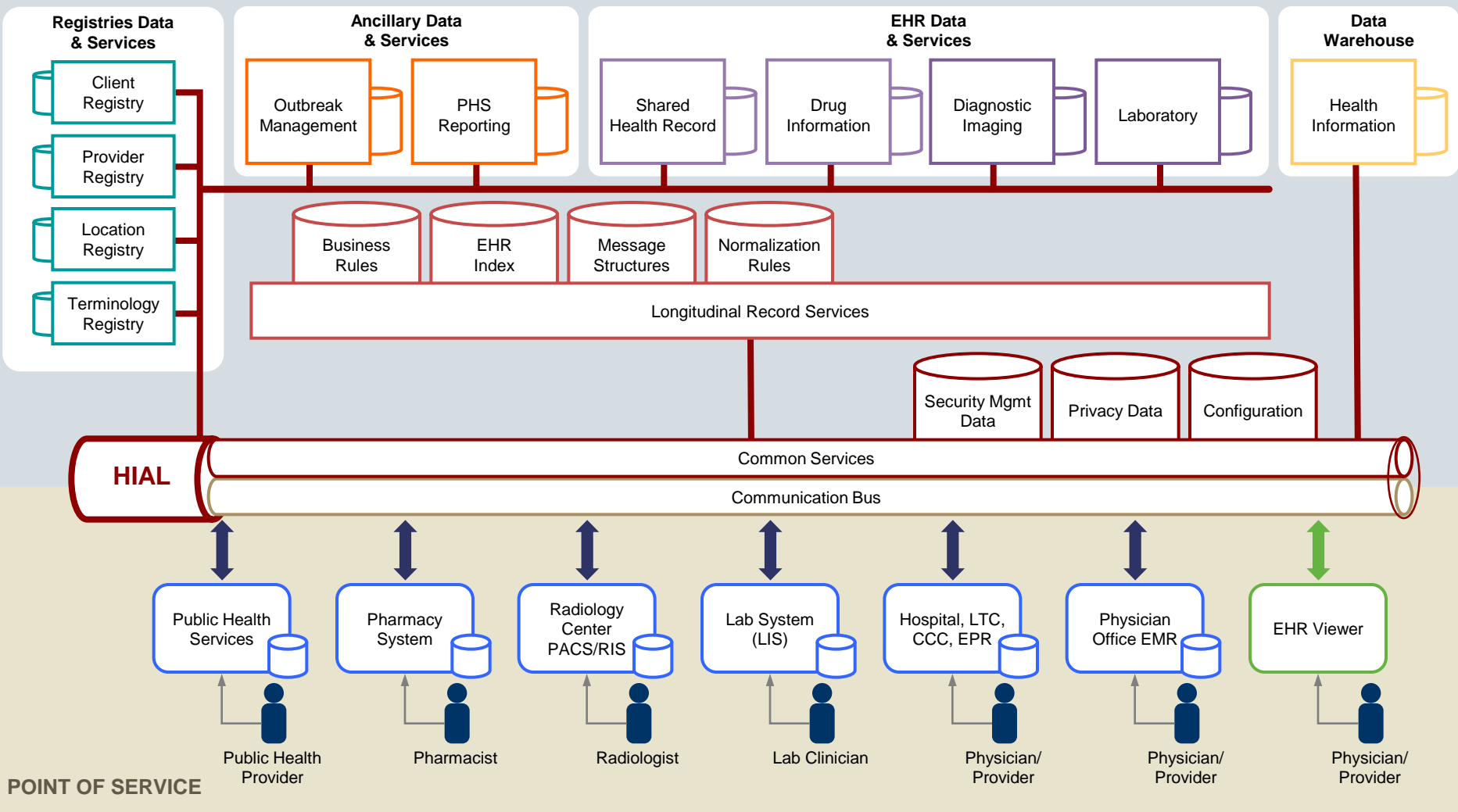


DON'T PANIC

**let's take a look at the
blueprint**

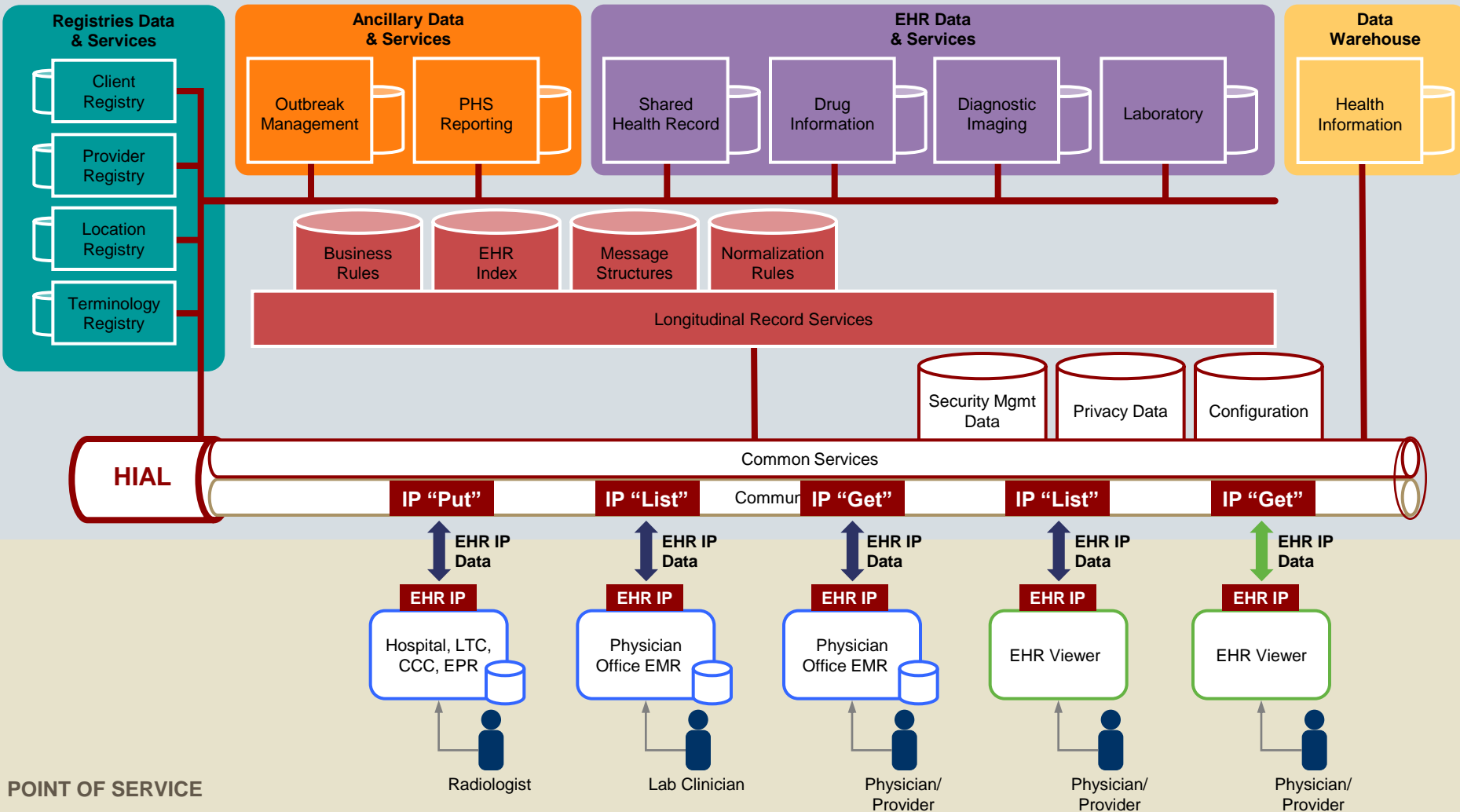
infoway blueprint

JURISDICTIONAL INFOSTRUCTURE



interoperability profiles

JURISDICTIONAL INFOSTRUCTURE

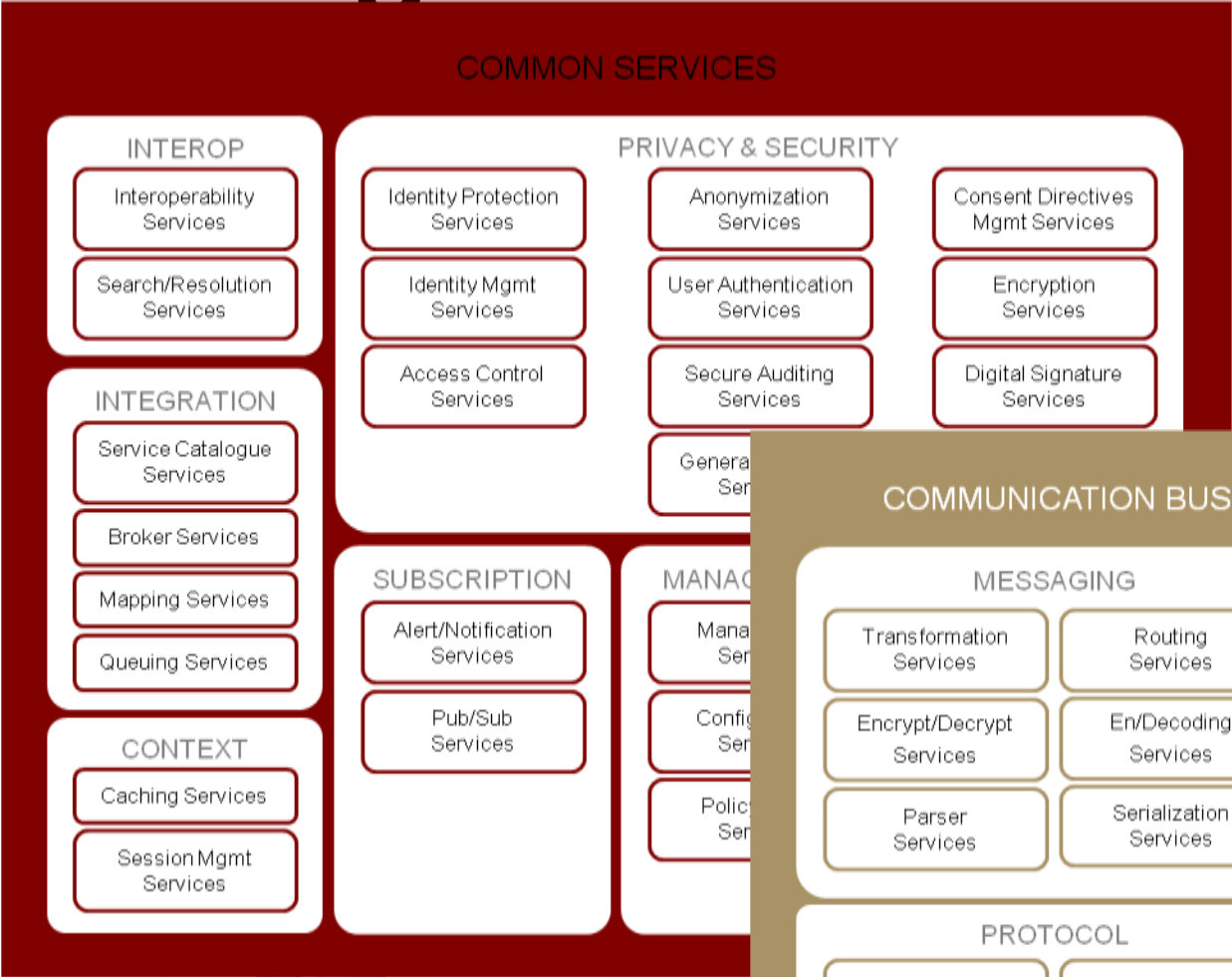




are you **bored** with this image
of the **blueprint** ?

**let's take a different
angle**

providing an **infostructure**

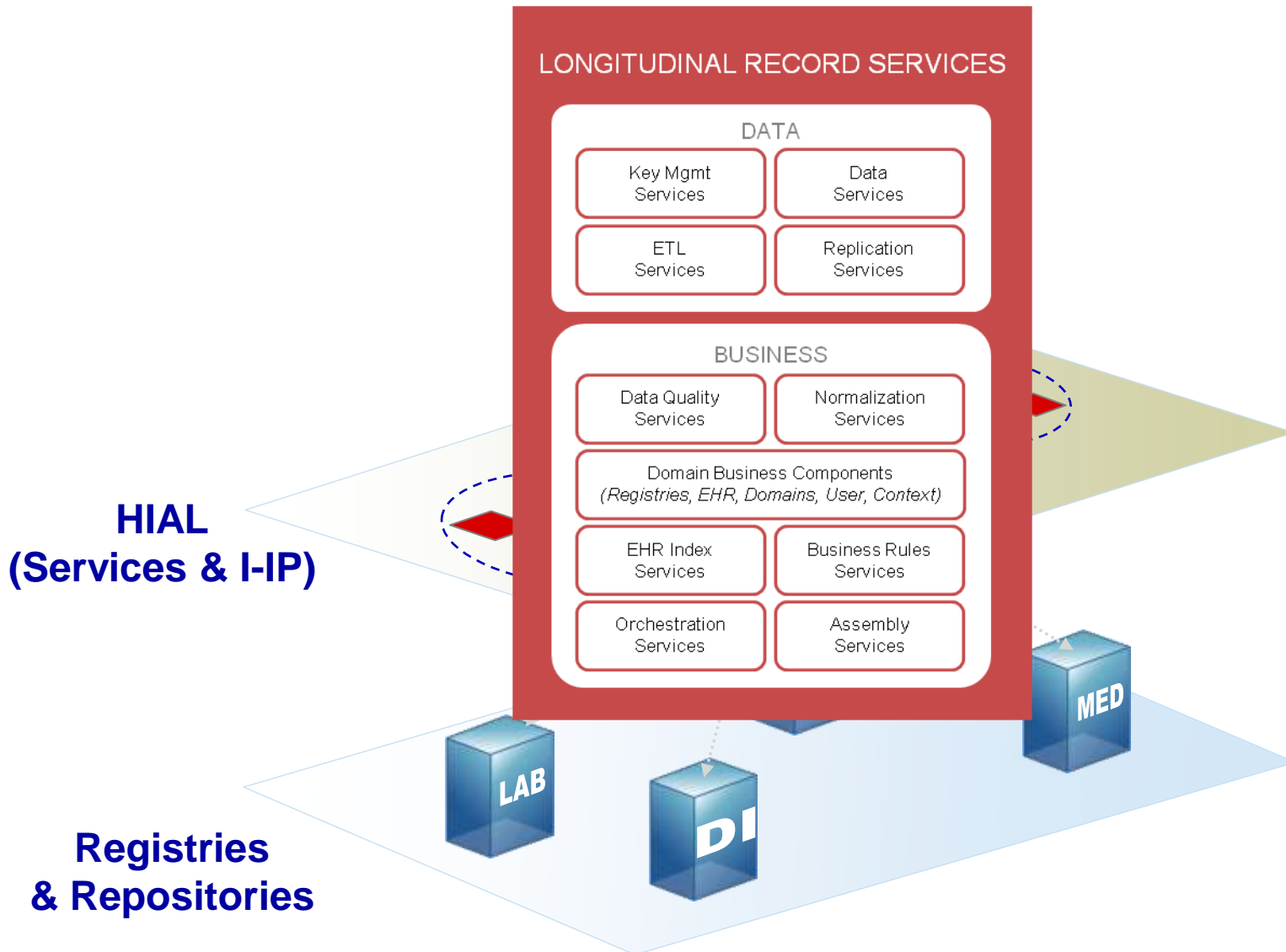


HIAL
(Services &

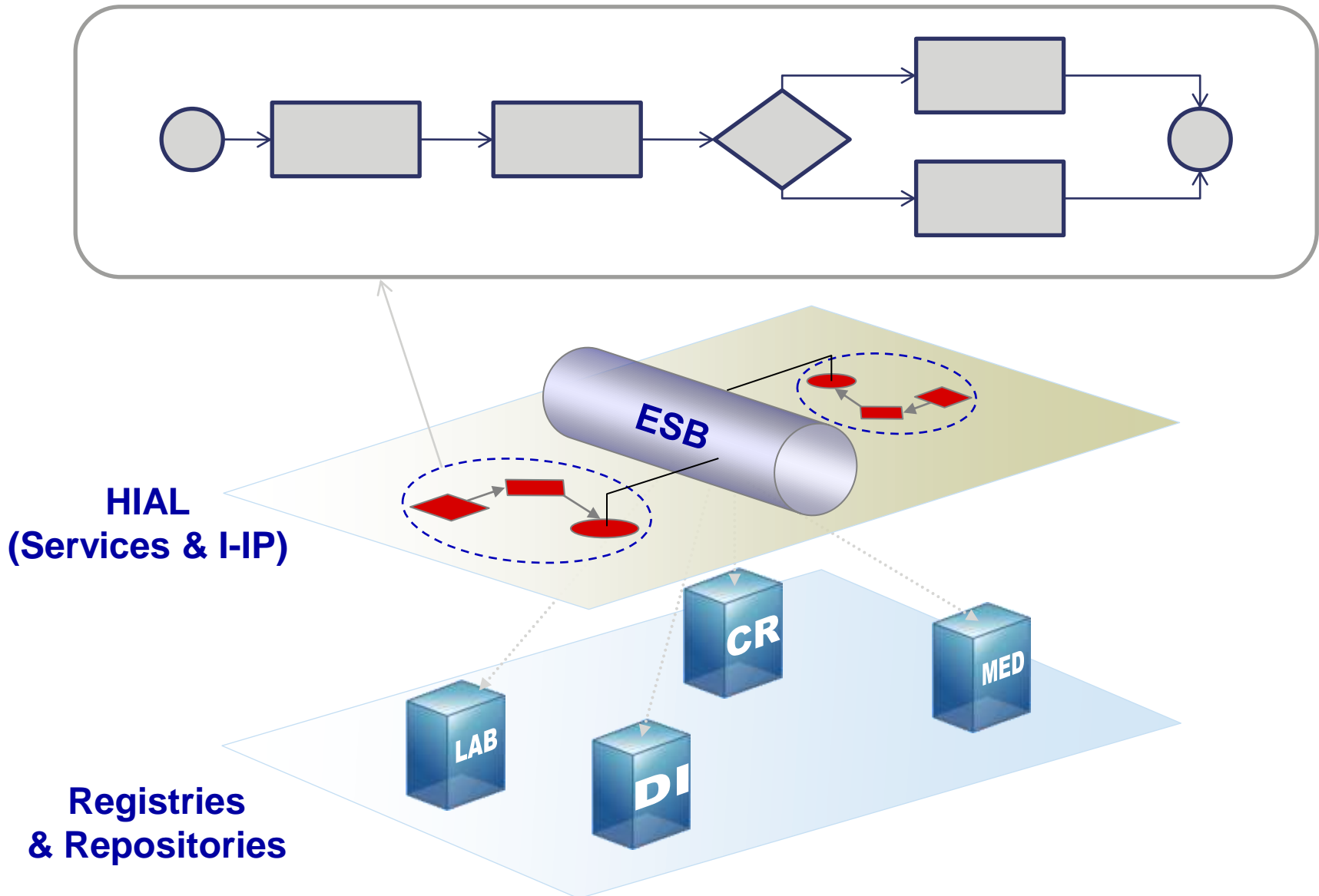
**Registries
& Repositories**



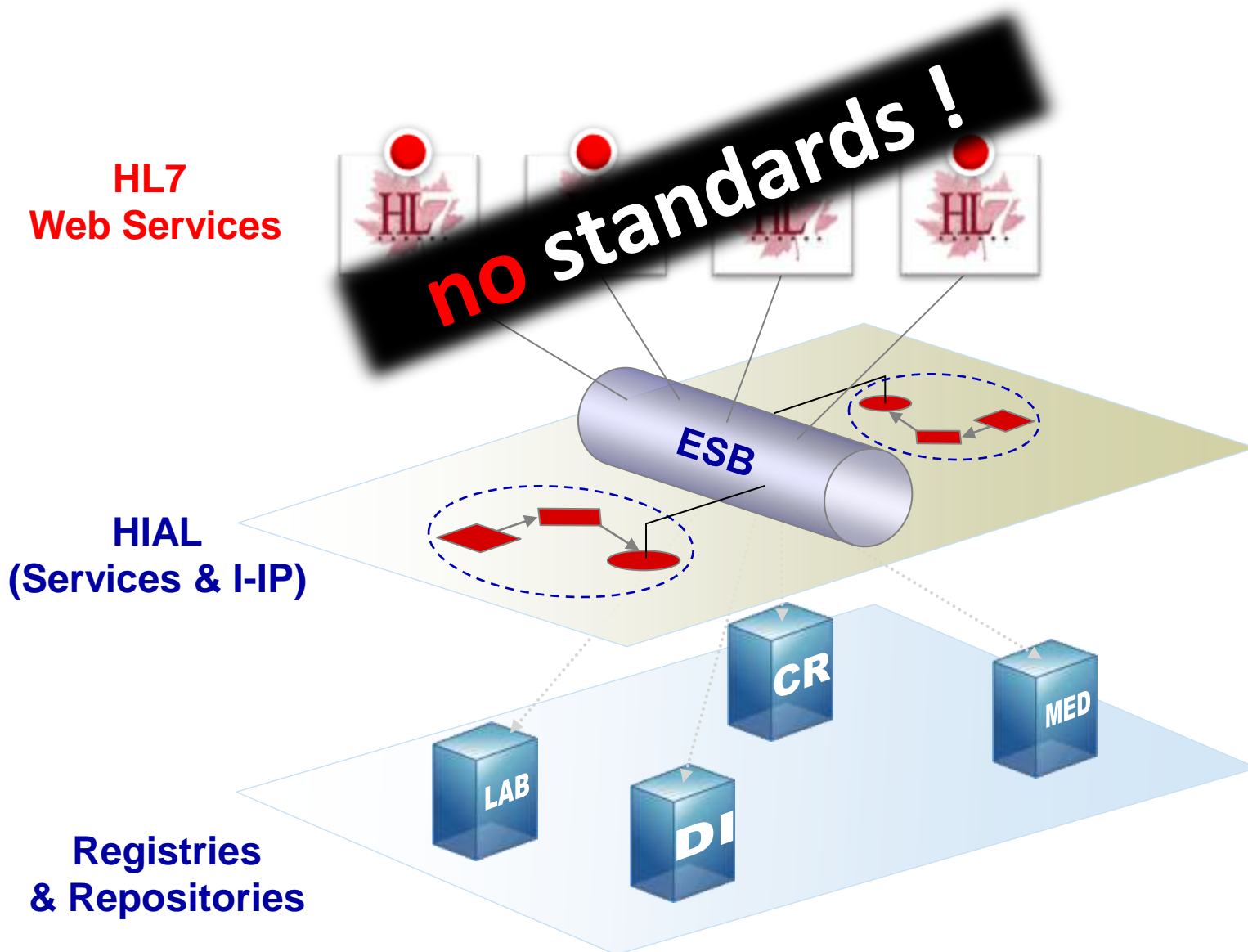
providing an **infostructure**



I-IP: **infostructure** interoperability profile



exposing **HL7** services



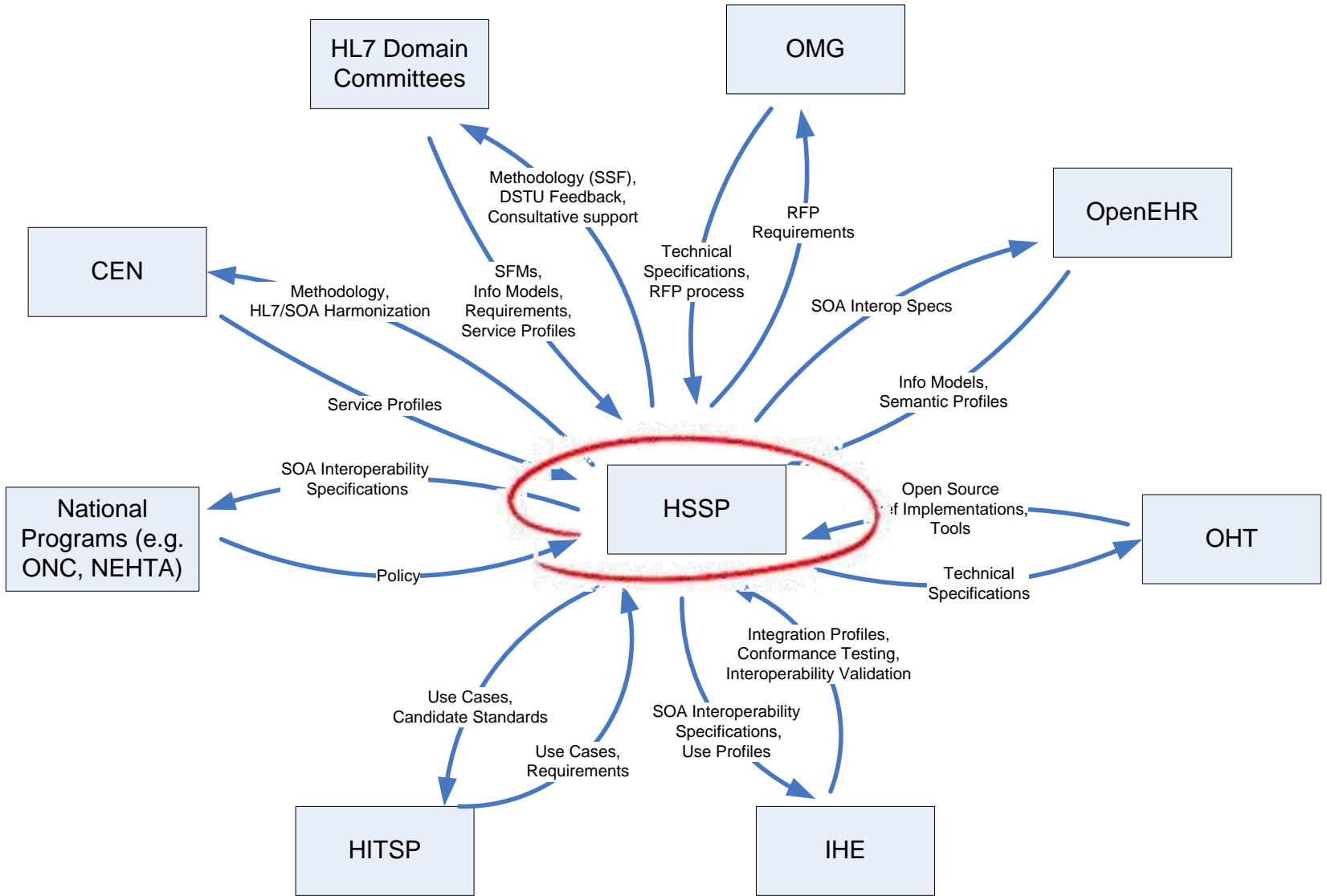
**let's talk about
standard services**

**there is an emerging
standard**

HSSP - Healthcare Services Specification Project



HSSP - Healthcare Services Specification Project



hssp.wikispaces.com

Functional Standards

- **Entity Identification Service (EIS)**
 - <http://www.omg.org/spec/EIS/>
- **Retrieve Locate Update Service (RLUS)**
 - <http://www.omg.org/spec/RLUS/>
- **Decision Support Service (DSS)**
- **Clinical Research Filtered Query (CRFQ)**
- **Human Services Directory (HSD)**
- **Privacy Authentication Security Services (PASS)**
- **Common Terminology Services 2 (CTS2)**

Implementation Guidance

- **Services Interoperability Profile**
- **HSSP Reference Architecture**

**services are
based on
HL7 RIM**

not based on
HL7 messages!

follow HSSP

as it should become

**the ultimate health
service standard!**

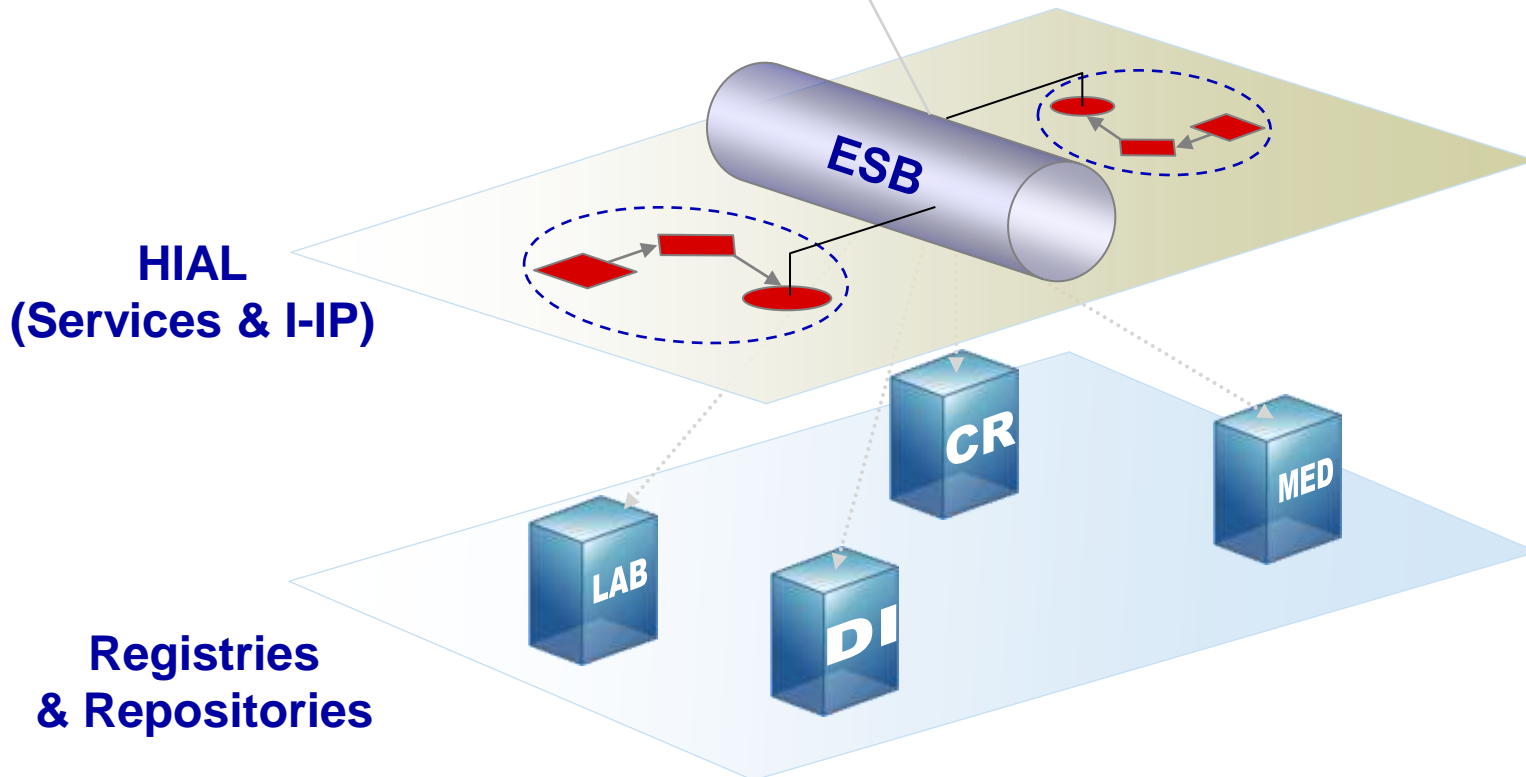
ok...

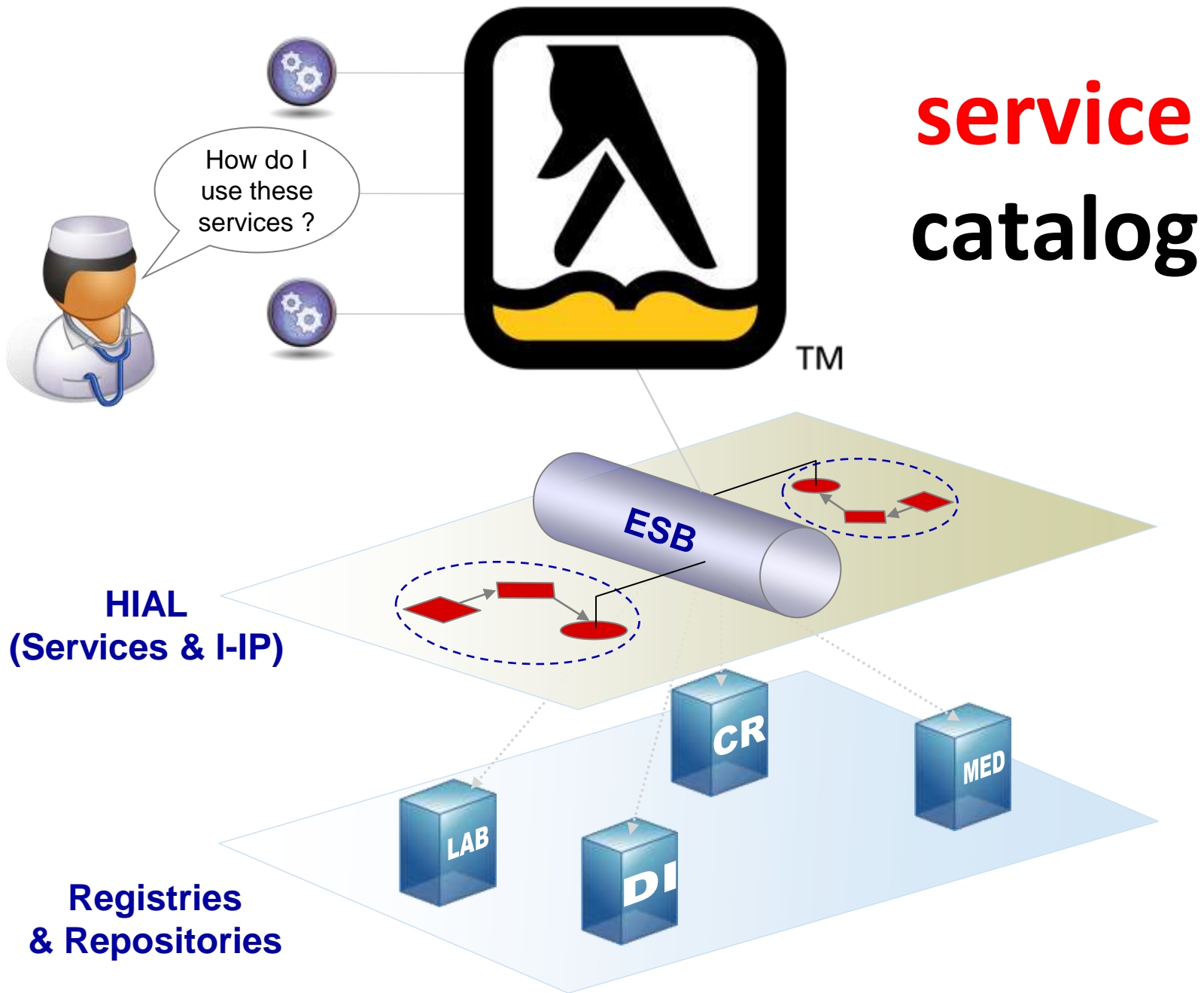
let's continue

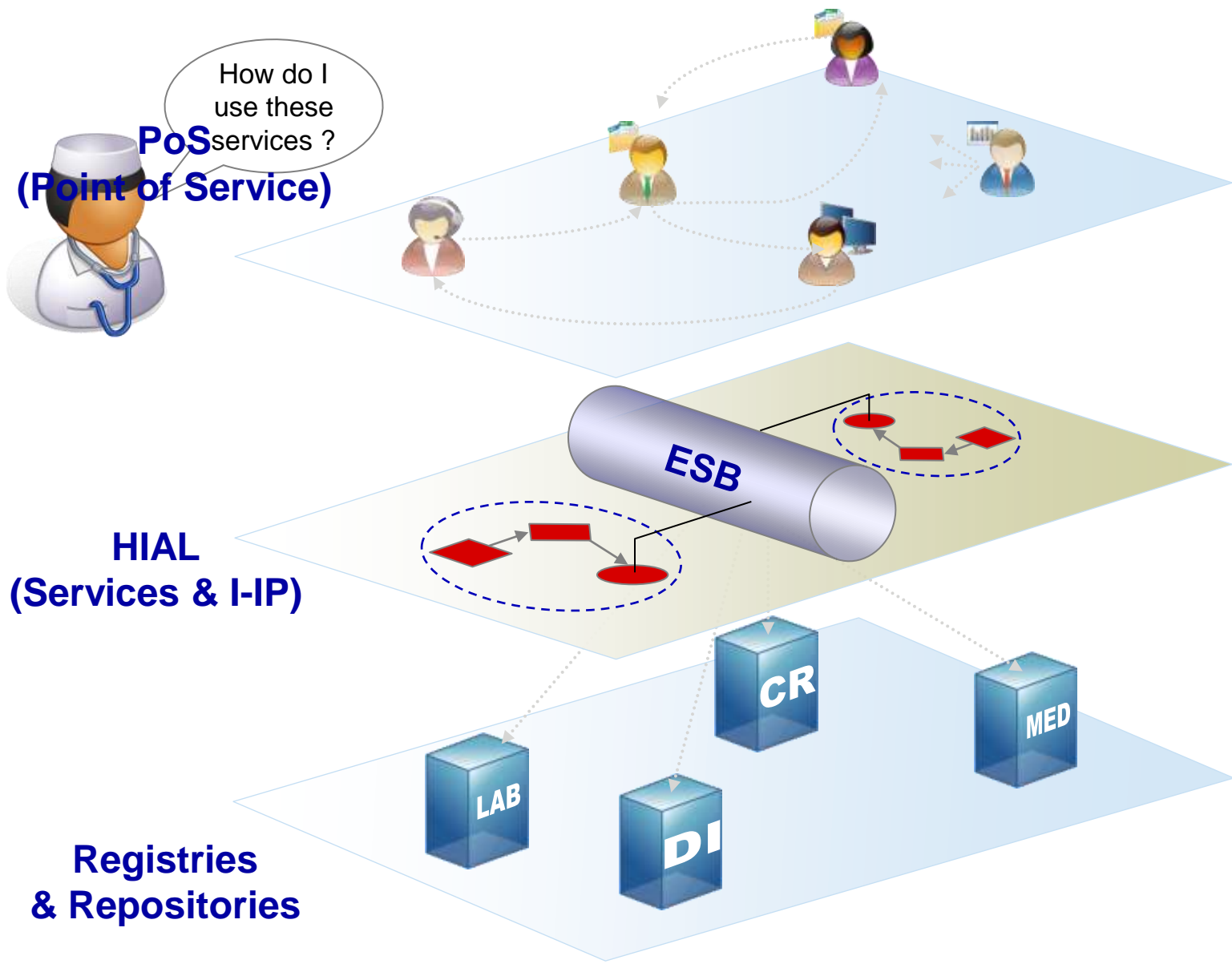
with the
x-profiles



service catalog







PoS
(Point of Service)

How do I use these services ?

HIAL
(Services & I-IP)

ESB

Registries & Repositories

LAB

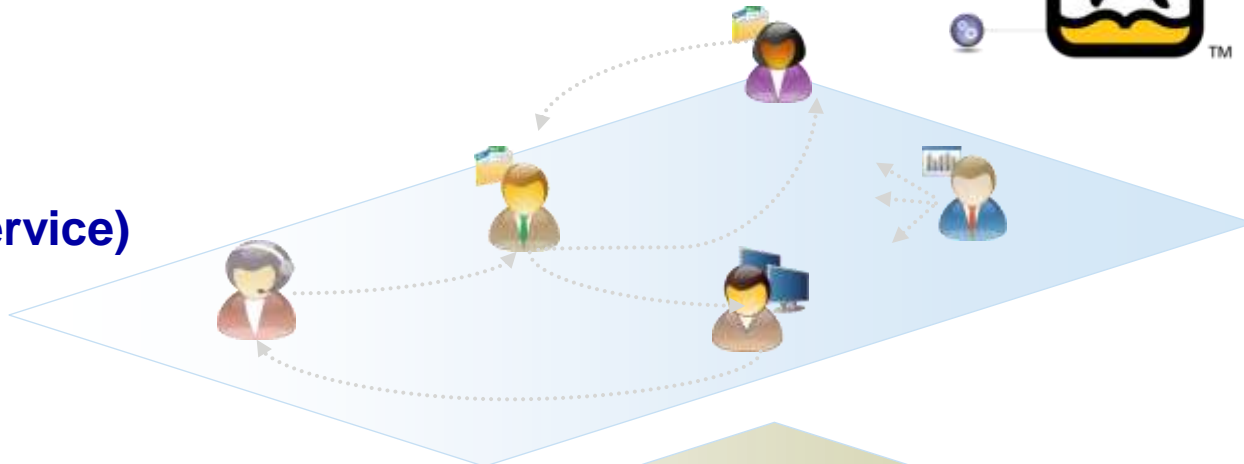
DI

CR

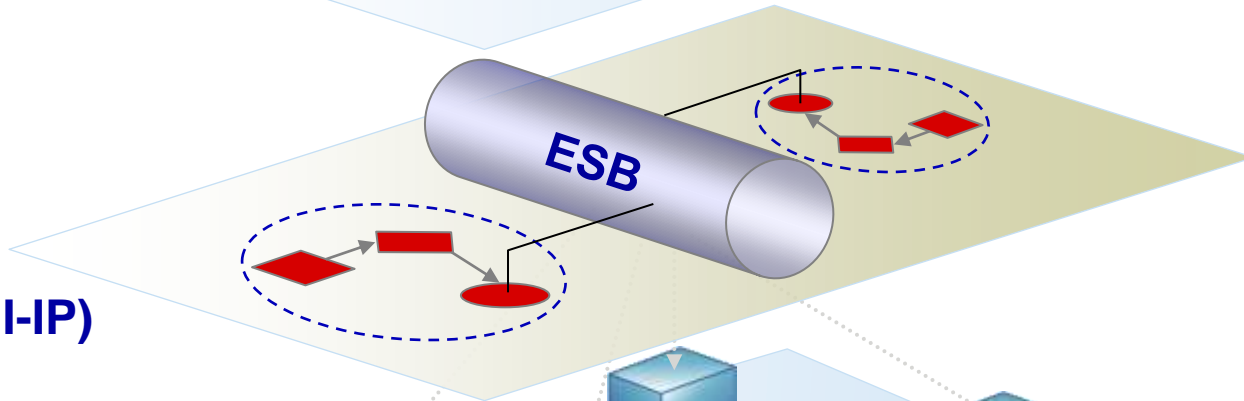
MED



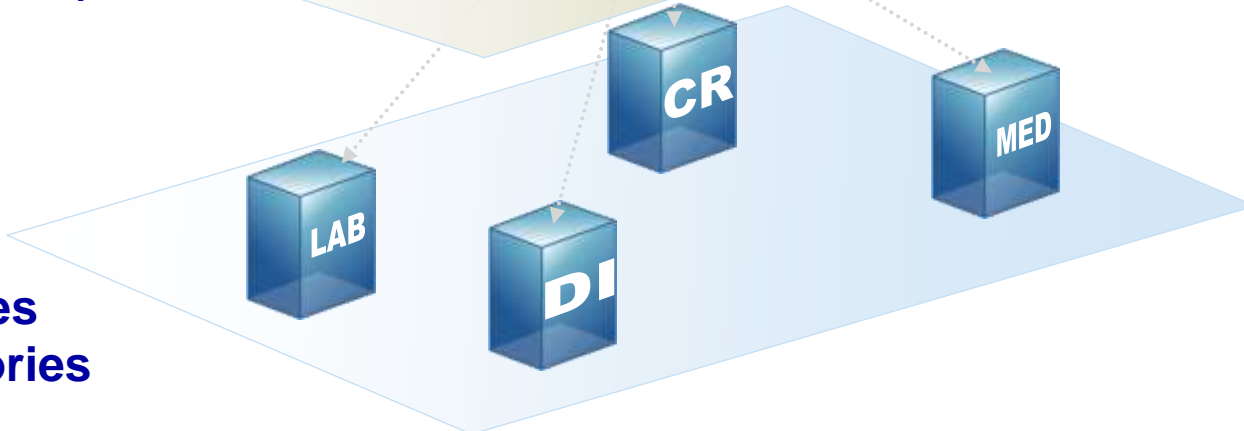
**PoS
(Point of Service)**



**HIAL
(Services & I-IP)**



**Registries
& Repositories**



how do I know **which**
service to use and
when to use it ?

do you know what a
service catalog looks
like ?

**here's an example of
catalog**



sample service catalog

Composante	No de Transaction	Nom de la transaction
RU	N2.1	FindCandidates
	N2.2	GetPersonDemographics
RI	C2.1	Provider Details Query
ODS/LDS	C20.01	Locations Summary Query
	C20.04	Location Details Query
Medicament	C01.02	Get Patient Drug Dispense History
	C01.03	Get Single Drug Dispense Details
	C04.01	Fill Drug Prescription Activate
	C07.01	Stop Prescription
	C17.01	Generic Retract
Laboratoire	L1.1	Unsolicited Lab Test Results
	L1.6	Revised Results Request
	L2.1	Query Laboratory Test Results
Données urgence	C12.01	Add Patient Medical Condition
	C12.02	Update Patient Medical Condition
	C12.03	Get Patient Medical Conditions
	C12.07	Get Patient Medical Conditions No History
Consentement	C15.03	RecordConsentDirective
	QC.001	GetConsentDirective
	QC.002	ListConsentDirective
	QC.003	ReviseConsentDirective
	QC.004	RecordConsentDirectiveNotification

how do I use that ?

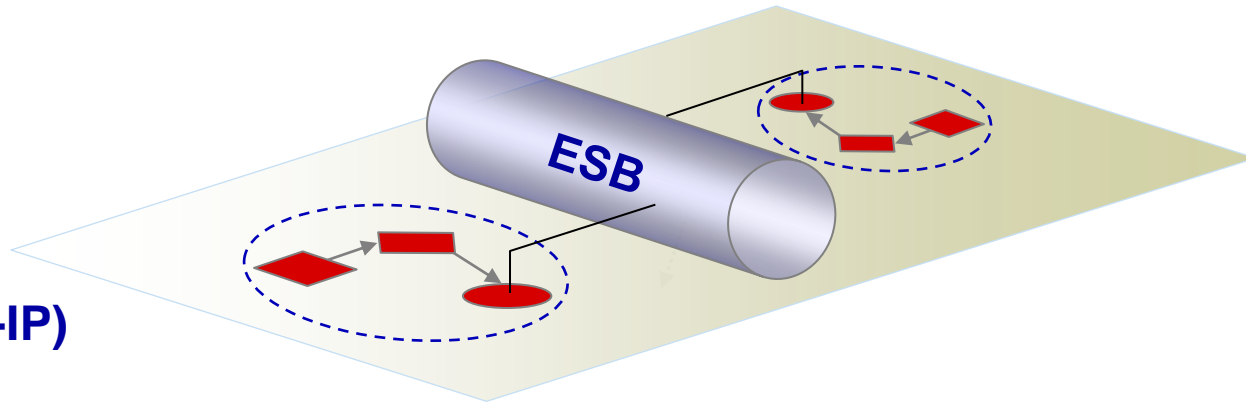
**what is the service
call **sequence** ?**

**what is the service
call context ?**

this is why you need

EHR-IP

**HIAL
(Services & I-IP)**

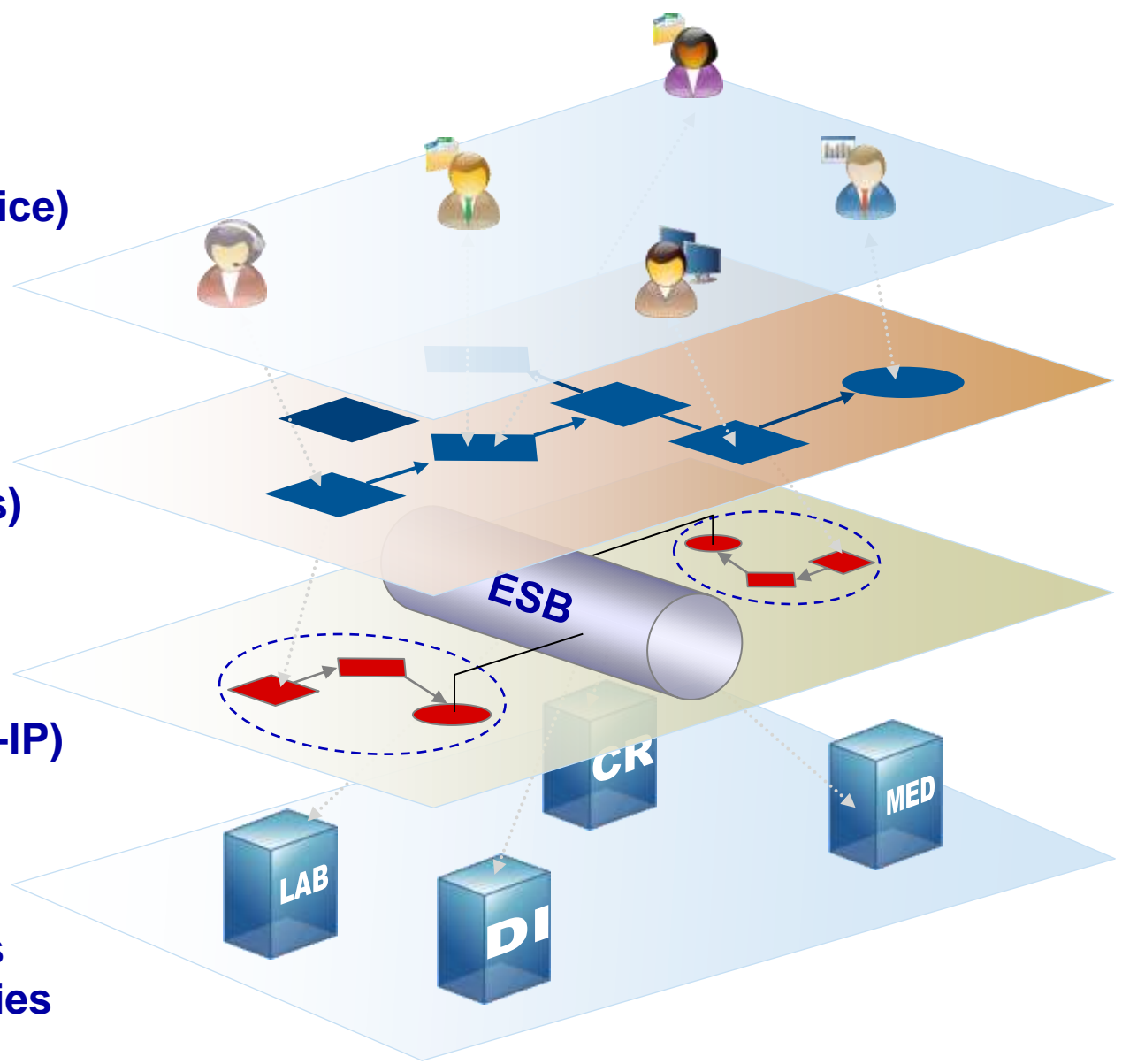


**PoS
(Point of Service)**

**EHR-IP
(Processes)**

**HIAL
(Services & I-IP)**

**Registries
& Repositories**



**here is a real life
example**

for this to work...

you need
complete support
from management!

benefits summary

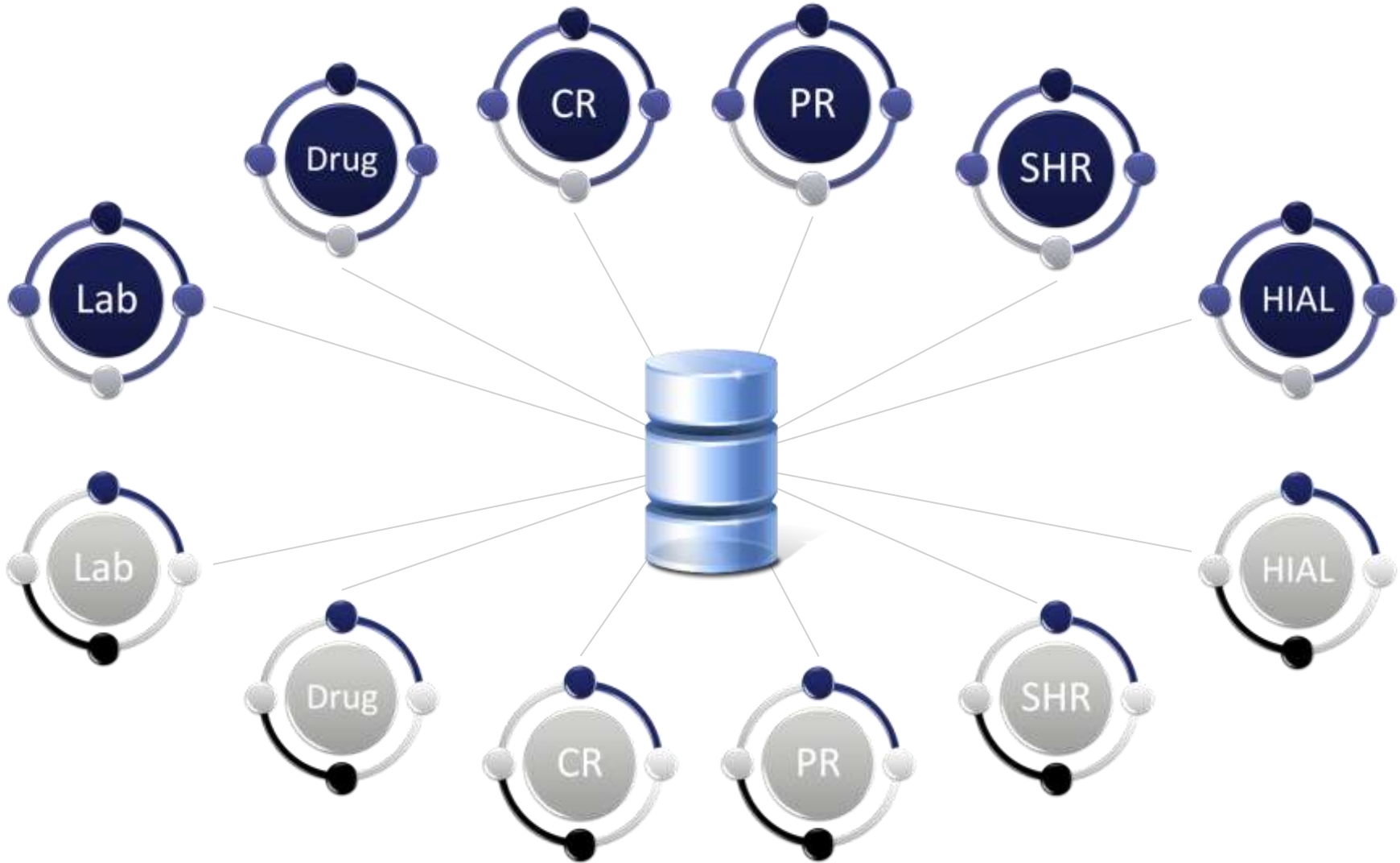
sharing the vision...



time saving...



vendor teams



client teams



WE LOVE
TO BUILD™

build better solutions...

to better **serve...**



thank you !

presented by

david paré

